

- Meets TIA/EIA-606-A labeling administration standards.
- Labor savings. Installer can produce and print labels before installation.
- Saving job files reduces potential for error and eliminates the time to re-enter information when changes and additions are required.

Features/Benefits

- Makes closets and work stations look professional with clearly marked connections and leaves an impression of quality workmanship.
- In ever-changing work environments, clearly marked connections will make moves, adds, and changes easier by eliminating mistakes and wasted time.

Hubbell Labeling Solutions Software

To purchase, visit our website at www.hubbell-premise.com.

Catalog No. **XPSOFT**

Patch Panel and Rack Labels



XPLPPA10W

Delivery: Package of 10 paper sheets, 8.5" x 11".

Laser-Printable Label Sheets and Covers

offer extensive labeling options for the front of Hubbell patch panels.

Delivery: 10 8.5" x 11" label sheets.

Description	Identifies	Label Sheets Catalog No.	Extra Label Holders Catalog No.
Adhesive patch panel 8-port front labels	1600 ports	XPLPPA10W	-
Patch panel 8-port adapter paper labels. Use with label holders supplied with panel.	1440 ports	XPLPP10W*	XPHP50
Patch panel ID paper labels. Use with supplied vertical ID label holders.	180 panels	XPLPPID10W	XPHPID1U10 (for 1U) XPHPID2U10 (for 2U)

* Standard color is white, for other colors replace "W" with one of the following: "Y" = yellow or "B" = blue.

Description	Identifies	Label Sheets Catalog No.	Extra Label Holders
1"x6" Rack and cabinet identification labels		XPLRC10W	XPHRC10

Port Identification



XPL1TO480

Pre-printed numbering strips are made of a durable black polycard material with a pressure sensitive adhesive back. Port numbering strips provide the capability to consecutively number separate patch panels up to 480.

Delivery: 60 8-port strips

Description	Identifies	Catalog No.
Adhesive pre-printed number strips 1-480	480 ports	XPL1TO480

Multimedia Panel Labels

Delivery: Package of 10, 8.5" x 11" paper sheets.

Description	Labels per sheet	Label Sheets Catalog No.	Extra Label Holders Catalog No.
Paper 8-port front label strips (use with label holders supplied with panel).	18	XPLUDX2410W	XPHUDX2410

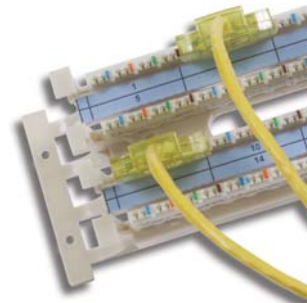
NOTE: Use XPLFOSEPAW labels for the UDX36 multimedia panel.



Cross Connect, 110 and 6-110 Labels

Delivery: Package of 10, 8.5" x 11" paper sheets.

Description	Labels per sheet	Label Sheets Catalog No.	Extra Label Holders Catalog No. (10-pk)
Paper index strip, white.	18	XPL11010W	XPH11010
Paper index strip, blue.	18	XPL11010B	XPH11010
Paper index strip, yellow.	18	XPL11010Y	XPH11010



Face Plate and Port Labels

Delivery: Package of 10, 8.5" x 11" paper sheets.

Description	Labels per sheet	Label Sheets Catalog No.	Extra Label Holders Catalog No.
Paper face plate labels, white.	63	XPLFP10W	-
Adhesive face plate labels, white.	120	XPLFPA10W	-
Adhesive face plate labels, clear.	120	XPLFPA10C	-
Adhesive port icon labels, white.	325	XPLIPA10W	-
Adhesive port icon labels, clear.	325	XPLIPA10C	-



Cable Labels

Features/Benefits

- Self-laminating, laser-printable cable labels are designed to identify all sizes of wire and cables quickly, clearly and economically.

Specifications

- TIA/EIA-606-A standard compliant.

Label Description	Labels per Sheet	Cable OD	Catalog No.
For 2-4 strand fiber cables	63	0.11 to 0.21	XPLCBLA1
For 4-pair copper UTP and 2-12 strand fiber cables	49	0.15 to 0.27	XPLCBLA2
For 25-pair copper UTP and 24-132 strand fiber cables	21	0.31 to 0.70	XPLCBLA3



Fiber Adapter Panel Labels

Delivery: Package of 10, 8.5" x 11" paper sheets.

Description	Labels per sheet	Label Sheets Catalog No.	Extra Label Holders Catalog No.
White, adhesive labels for fiber six-packs	38	XPLFOSEPAW*	-

* Cannot be used with the high-density versions of the FSP adapter panels.

