

Hubbell Labeling Solutions Software

Order Information

To purchase, visit our website at www.hubbell-premise.com.

Catalog No. **XPSOFT**

Patch Panel Labels



XPLPPA10W



XPL1TO480

Order Information

Laser-Printable Label Sheets and Covers (XPHPP10W) offer extensive labeling options for the front of Hubbell patch panels.

Delivery: 10 8.5" x 11" label sheets.

Description	Identifies	Catalog No.
Adhesive patch panel 8-port front labels	1600 ports	XPLPPA10W
Patch panel 8-port adapter paper labels. Use with label holders supplied with panel.	1440 ports	XPLPP10W*
Patch panel ID paper labels. Use with supplied vertical ID label holders.	180 panels	XPLPPID10W

* Standard color is white, for other colors replace "W" with one of the following: "Y" = yellow or "B" = blue.

Extra Paper Label Holders

Description	Identifies	Catalog No.
8-port clear plastic paper holders (pack of 50)		XPHPP50
1U panel ID label holders (pack of 10)		XPHPPID1U10
2U panel ID label holders (pack of 10)		XPHPPID2U10

Port Identification

Pre-printed numbering strips are made of a durable black polycard material with a pressure sensitive adhesive back. Port numbering strips provide the capability to consecutively number separate patch panels up to 480.

Delivery: 60 8-port strips

Description	Identifies	Catalog No.
Adhesive pre-printed number strips 1-480	480 ports	XPL1TO480

Multimedia Panel Labels



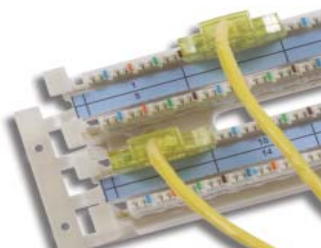
Order Information

Delivery: Package of 10, 8.5" x 11" paper sheets.

Description	Labels per sheet	Label Sheets Catalog No.	Extra Label Holders Catalog No.
Paper 8-port front label strips (use with label holders supplied with panel).	20	XPLUDX1610W	XPHUDX1610
Paper 8-port front label strips (use with label holders supplied with panel).	18	XPLUDX2410W	XPHUDX2410

NOTE: Use XPLFOSEPAW labels for the UDX36 multimedia panel.

Cross Connect, 110 and 6-110 Labels



Order Information

Delivery: Package of 10, 8.5" x 11" paper sheets.

Description	Labels per sheet	Label Sheets Catalog No.	Extra Label Holders Catalog No.
Paper index strip, white.	18	XPL11010W	XPH11010
Paper index strip, blue.	18	XPL11010B	XPH11010
Paper index strip, yellow.	18	XPL11010Y	XPH11010

Face Plate and Port Labels

Order Information

Delivery: Package of 10, 8.5" x 11" paper sheets.

Description	Labels per sheet	Label Sheets Catalog No.	Extra Label Holders Catalog No.
Paper face plate labels, white.	63	XPLFP10W	-
Adhesive face plate labels, white.	120	XPLFPA10W	-
Adhesive face plate labels, clear.	120	XPLFPA10C	-
Adhesive port icon labels, white.	325	XPLIPA10W	-
Adhesive port icon labels, clear.	325	XPLIPA10C	-



Cable Labels

Features/Benefits

- Self-laminating, laser-printable cable labels are designed to identify all sizes of wire and cables quickly, clearly and economically.

Specifications

- TIA/EIA-606-A standard compliant.

Order Information

Label Description	Labels per Sheet	Cable OD	Catalog No.
For 2-4 strand fiber cables	63	0.11 to 0.21	XPLCBLA1
For 4-pair copper UTP and 2-12 strand fiber cables	49	0.15 to 0.27	XPLCBLA2
For 25-pair copper UTP and 24-132 strand fiber cables	21	0.31 to 0.70	XPLCBLA3



Jack Labels, Pre-Printed

Features/Benefits

- Makes closets and workstations look professional with clearly marked connections.

Specifications

- Meets ANSI/TIA/EIA-606-A labeling administration standards.

Order Information

Pre-printed icon booklet containing assorted clear icon labels to be applied on blank icons (shown above - sold in pack of 5 books). Each booklet has 11 pages with numerous labels ranging from A to G, FAX to Data.

Text color	Catalog No.	Text color	Catalog. No.
Black	XPICONS	White	XPICONSW



Fiber Adapter Panel Labels

Order Information

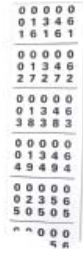
Delivery: Package of 10, 8.5" x 11" paper sheets.

Description	Labels per sheet	Label Sheets Catalog No.	Extra Label Holders Catalog No.
White, adhesive labels for FSPST6, FSPSCD3, FSLCQ3, FSPFC6 adapter panels.	38	XPLFOSEPAW*	-

* Cannot be used with the high-density versions of the FSP adapter panels.



Cabinet/Rack Label Kits



RRLABEL



XPHRC10

Order Information

Use to identify and number rack spaces.

Delivery: 5 strips, clear label with black lettering (numbers 01 through 75).

Dimensions: 27"H x 0.5"W.

Catalog No. **RRLABEL**

Order Information

Laser-printable label sheets and label holders.

Delivery: Package of 10, 8.5" x 11" paper sheets x 10 labels/sheet.

Description

Catalog No.

Rack Labels, 1"x6"

XPLRC10W

Rack and cabinet label holder (pack of 10)

XPHRC10

Jack Icons



Features/Benefits

- Color-coded icons snap easily onto the jack nose.

Specifications

- ANSI/TIA/EIA-606-A compatible.
- Flame-retardant material UL 94V-0.

Order Information

Icons are offered in packs of 100 blank or with a computer or telephone molded in. Customize each blank icon with our preprinted icon booklet.

Color	Blank	Computer	Telephone
Black	IBK100	IBK100C	IBK100T
Blue	IB100	IB100C	IB100T
Brown	IBN100	IBN100C	IBN100T
Electric Ivory	IEI100	IEI100C	IEI100T
Gray	IGY100	IGY100C	IGY100T
Green	IGN100	IGN100C	IGN100T
Orange	IOR100	IOR100C	IOR100T
Purple	IP100	IP100C	IP100T
Red	IR100	IR100C	IR100T
White	IW100	IW100C	IW100T
Yellow	IY100	IY100C	IY100T



Hubbell Premise Wiring

HUBBELL INCORPORATED (Delaware)

14 Lord's Hill Road • Stonington, CT 06378-0901 • (860) 535-8328 • 800-626-0005

Fax: (860) 535-8328 • Internet site: <http://www.hubbell-premise.com>

Worldwide Locations

Hubbell Premise Wiring, Asia Pacific
 Hubbell Canada Inc.
 Hubbell Premise Wiring, Central America
 Hubbell Premise Wiring, China
 Hubbell Premise Wiring, Colombia
 Hubbell Premise Wiring, Europe
 Hubbell Int'l. Inc., Korea Branch

852-2836-7131
 905-839-1138
 506-309-4158
 8621-6309-0119
 571-245-8940
 44-01283 500500
 82-2-(0)2607-1363

Fax: 852-2836-7132
 Fax: 905-839-9108
 Fax: 506-260-1616
 Fax: 8621-6309-0122
 Fax: 571-340-0925
 Fax: 44-01283 500400
 Fax: 82-2-(0)2603-7386

Hubbell Premise Wiring, Latin America
 Hubbell de Mexico, S.A. de C.V.
 Hubbell Premise Wiring, Middle East
 Hubbell-Taian Co., Ltd., Taiwan
 Hubbell Premise Wiring, Turkey
 Hubbell Premise Wiring, Venezuela

305-408-4501
 (5255) 9151-9999
 971-4-393-4192
 886-2-2522-1862
 90-216-313-5016
 58-416-680-7453

Fax: 305-408-8201
 Fax: (5255) 9151-9989
 Fax: 971-4-393-4194
 Fax: 886-2-2522-1872
 Fax: 90-216-414-8148
 Fax: 58-281-274-7900